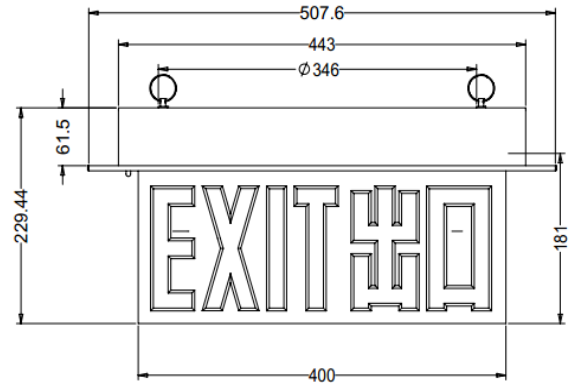


EXL009 LED Exit & Emergency Light

Catalog #		Prepared by	LiteHarbor
Project		Date	
Notes			



Description

- 1) Universal Single or Double Face
- 2) Energy Saving LED Lamps
- 3) Heavy Duty 20 Gauge Steel Housing
- 4) Durable White Powder Coated Finish Other Finish
Please Consult Factory
- 5) Etched, clear acrylic edge-lite face plate
- 6) Universally Surface Mounted, Recessed Mounted,
Pendant Mounted All Are Available
- 8) Red or Green Letter Colors

Electrical

- 1) Dual Voltage Input 110-277VAC 60Hz
- 2) Solid-State Voltage Limited Charger
- 3) Solid-state Switching
- 4) Brownout Circuit
- 5) Low Voltage Disconnected
- 6) Overload/Short Circuit Protection
- 7) Test Switch/Power Indicator Light

Battery

- 1) Sealed Nickel Cadmium (Self-Powered exits only)
- 2) Maintenance-Free, Long Life
- 3) Full Recharge Time 24 Hours (max)
- 4) 3.6V

Lamp Date

Order Matrix

A	B	C	D	E	F
---	---	---	---	---	---

Item No.: EXL009

A	Series
EXL009	Exit Sign

B	Input Voltage
120V	
277	277V
U	120-277V

C	Battery
	Battery Backup
AC	AC Only No battery

D	Letter Colour
GN	Green
RD	Red



EXIT & EMERGENCY LIGHT



Liteharbor Lighting Technology Co., Ltd.
New Industry Area Hecun Danzao Town
Nanhai Foshan City Guangdong China

TEL: +86-757-8180 8687
FAX: +86-757-8180 8685
E-mail: sales@liteharbor.com

Website: www.liteharbor.com
Specifications subject to change w/o notice
Revision: Jan. 2013

- 1) AC LED: Long Life LED Lamps Provide Uniform Diffused Illumination
2.5W, AC
- 2) DC: LED Lamps
3W 3.6VDC

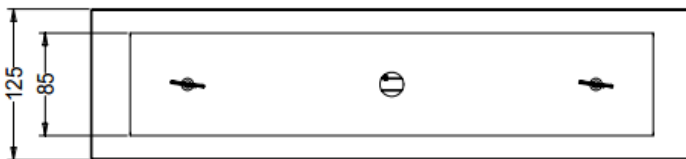
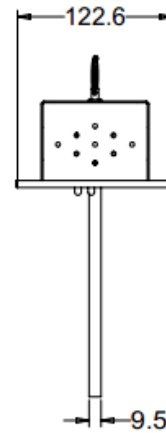
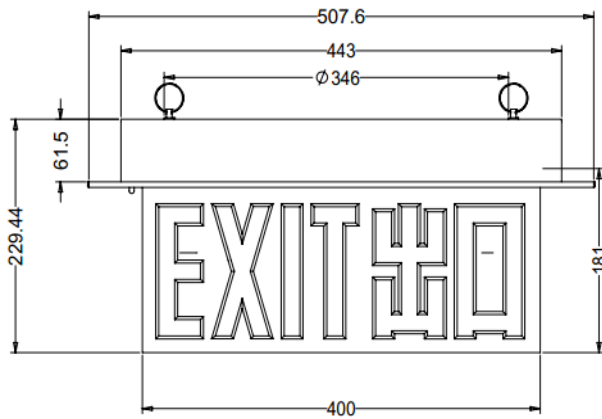
Warranty

EXIT: 2-Year
Battery: 15 Year Pro-rata

E	Face
SF	Single
DF	Double

F	Mounting
SM	Surface Mounted
RM	Recessed Mounted
PM	Pedant Mounted

Other Special Requirements Please Confrim With Factory



EXIT & EMERGENCY LIGHT

