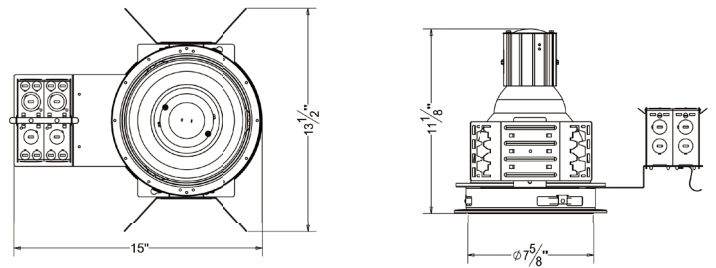




8" Architectural Vertical Housing



ORDER MATRIX | Example: A8-VA

A	B	C	D	E	F
A	Series				
A8-VA	8" Architectural Vertical Housing				
B	Input Voltage				
	120V				
277	277V				
U	120-277V				
C	Lamp				
P30	PAR30				
P38	PAR38				
A19	A19				
A21	A21				
A23	A23				
D	Wattage				
L18	18W				
L24	24W				
L12	12W				
L17	17W				
L20	20W				
E	Color Temperature				
28K	2800K				
35K	3500K				
50K	5000K				
65K	6500K				
F	Options				
C	C-channel Bar Hanger				
F	Flat Bar Hanger				
H	Wood Joist Bar Hanger				

Mounting

- Constructed from 16-gauge steel, die-formed construction for max heat dissipation and rust protection
- Precision tooled springs secure trim to mounting frame for effortless and tool-less installation
- Compatible with C-channel, flat bar wood joist bar hanger and EMT.
- Fully assembled for ease of installation
- Non-IC housing require a minimum clearance of 3" around from thermal insulation and 1/2" from combustible material from above the fixture

Junction Box

- Pre-wired junction box provided with 1/2" and 3/4" knockouts
- Provided with removable access plates
- Knockouts equipped with pry out slots
- All leads are #18AWG wire, the ground wire connected to the bottom and quick connectors are supplied on all leads
- Through branch circuit wiring(4 in, 4 out)

Socket Cup

- Adjusts vertically for optimum light performance
- Die-cast fin construction for heat dissipation
- Unitized optics guarantees proper trim to housing installation
- Tool-less installation adjustability from either outside the housing or inside the housing

Reflector

- High quality reflector with 1.2mm thickness available finishes and types in multiple architectural finishes and types.
- Optional painted white flange is available
- Single position optics eliminate possibility of specified lamp being installed in incorrect position

Thermal Protector

- Meet ETL requirements
- Standard thermal protection device guards against improper installation, over lamping and misuse of insulation material
- External thermal device located on the junction box wrap

Socket

- E26 medium base

Lamp

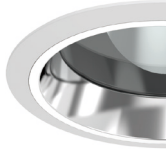
- LED PAR30 18W max.
- LED PAR38 24W max.
- LED A19 12W max.
- LED A21 17W max.
- LED A23 20W max.
- CRI>80%
- PF>0.9
- Color Temperature: 2800K-6500K

Listing

- ETL listed for damp location W/Feed through



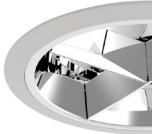
RV8002
8 inch Vertical Reflector
Self Flanged/White Ring



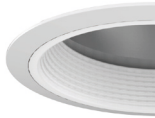
RC802
8 inch Vertical Reflector with
Regressed Lens
Self Flanged/White Ring



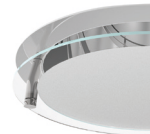
RC803
8 inch Vertical Baffle with
Regressed Lens
Self Flanged/White Ring



RC808
8 inch Vertical Cross Blade
White Ring



RV812
8 inch Vertical Reflector with
Baffle
White Ring



RC188
8 inch Vertical Reflector with
Drop Glass
Self Flanged